



Alphacomm.net

A Subsidiary of Upper Peninsula Telephone Company

Providing Exceptional DSL, Dial-Up,
and Long Distance Services

397 US 41 N – P.O. Box 86
Carney, MI 49812-0086
906.639.3500 (Local)
877.450.3500 (Toll Free)

DSL Setup Guide

Rev. April 17, 2009



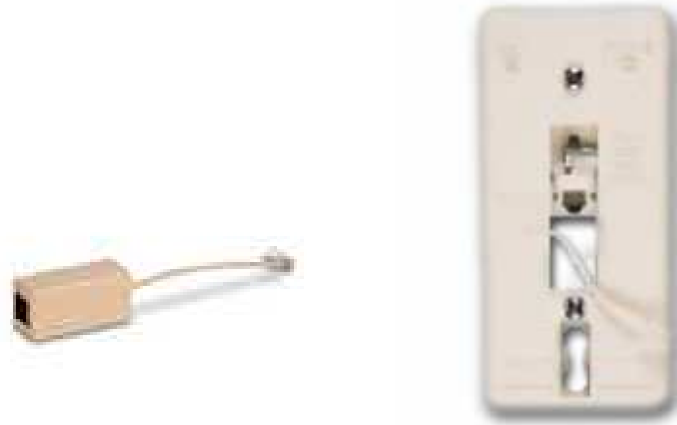
Comtrend CT-5611T

**For Technical Support, Call
877-450-3500 (Toll Free)
or
906-639-3500 (Local)**

DSL Modem Installation Instructions

1. Install DSL filters on all active phone jacks.

DSL Filters



Standard Filter

Wall Mount Filter

Figure 1: DSL Filter for Standard and Wall Mounted Phone Jacks

- a. This includes fax machines, satellite dishes, alarm systems, and telephones. **NOTE:** You MUST obtain filters for all alarm systems from the alarm system manufacturer.

Satellite dishes MUST be filtered.

- b. The filter MUST be placed at the jack, NOT at the equipment.

2. To install the DSL filters on a standard jack:

- a. Unplug the phone line from the jack.
- b. Plug the phone line into the filter.
- c. Plug the filter into the wall jack.

3. To install the DSL filters on a wall mounted jack:

- a. Remove the existing wall telephone from the jack.
- b. Insert filter into wall jack.

- c. Mount the filter over the wall jack lugs and slide down to attach.
- d. Fully insert the telephone into the filter jack.
- e. Mount the telephone over the filter lugs and slide down to attach.

Connecting the Comtrend CT 5611-T to Computer

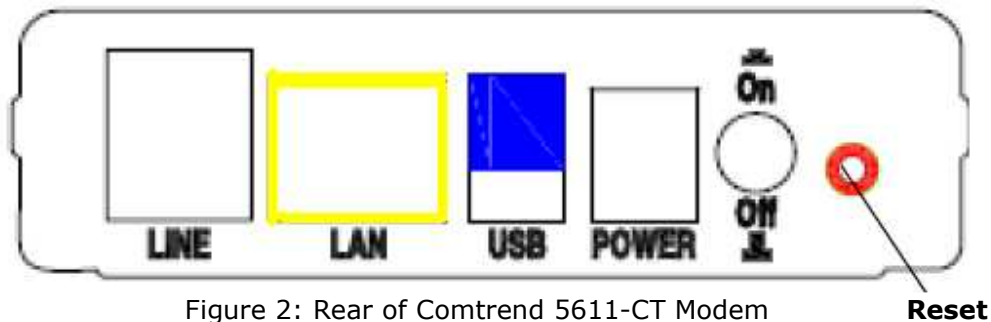


Figure 2: Rear of Comtrend 5611-CT Modem

4. **Connect the Yellow Ethernet (LAN 10/100M) cable to the back of the modem.**
5. **Connect the power cable to the back of the modem and to the power outlet or surge protector.**
6. **Verify that the modem Power button is in the On position.**
7. **Connect the telephone line to the DSL port on the modem.**
 - a. You should use the telephone line that was previously attached to your computer for dial-up Internet service, if available.
 - b. The phone line should run directly from the wall jack to the back of the modem. There should be no splitters or filters (except for the splitter filter provided), surge protectors, fax machines or any other equipment on that line.
 - c. DO NOT place a filter (other than splitter filter provided) on the jack where the DSL modem will be connected.
8. **Verify that the proper lights are lit on the front of the modem.**
 - a. The power light should be lit and solid.
 - b. The ADSL Link light should be lit and solid.
 - c. The LAN Link light should be lit and solid.
 - d. The Internet light should be lit and solid but may blink rapidly when surfing the Internet.

9. ***Try surfing the Internet. ***

- A. If you can surf the Internet, the installation is complete. Continue to **Email Setup**.

If you cannot surf the Internet continue to the Configure the PC section.

Configure the PC

1. The next step is to disable any proxy settings in the Control Panel screen.
 - a. Windows Vista users should click on **Start**, then choose **Control Panel**.
 - b. Click **Classic** view if not already selected.
2. In the Control Panel, double click on **Internet Options**.
 - a. Click on the **Connections** tab at the top of the screen.
 - b. You will then need to click on the **LAN Settings** button.



Figure 5: Internet Properties Screen

3. In the **Local Area Network (LAN) settings** screen, make sure that there is NOT a check mark on the **Use a Proxy server** (see Figure 6).

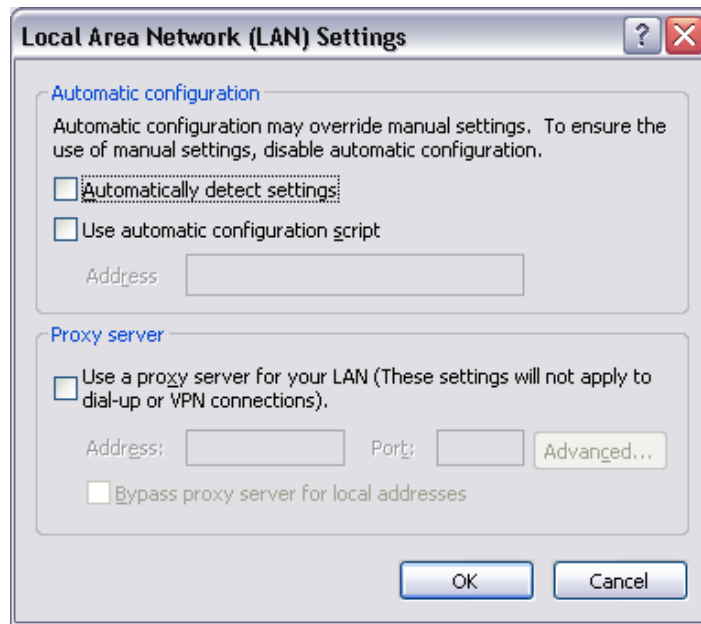


Figure 6: LAN Settings

4. When you have verified that there is not a check mark on the **Proxy server**, click **OK** at the bottom of the screen and click **OK** again to exit Internet Options. This will take you back to the **Control Panel**.
5. In the **Control Panel**, double click on the **Network and Sharing Center** icon.
6. Click on **Manage Network connections**.
7. Right click on the **Local Area Connection** and then choose **Properties**.

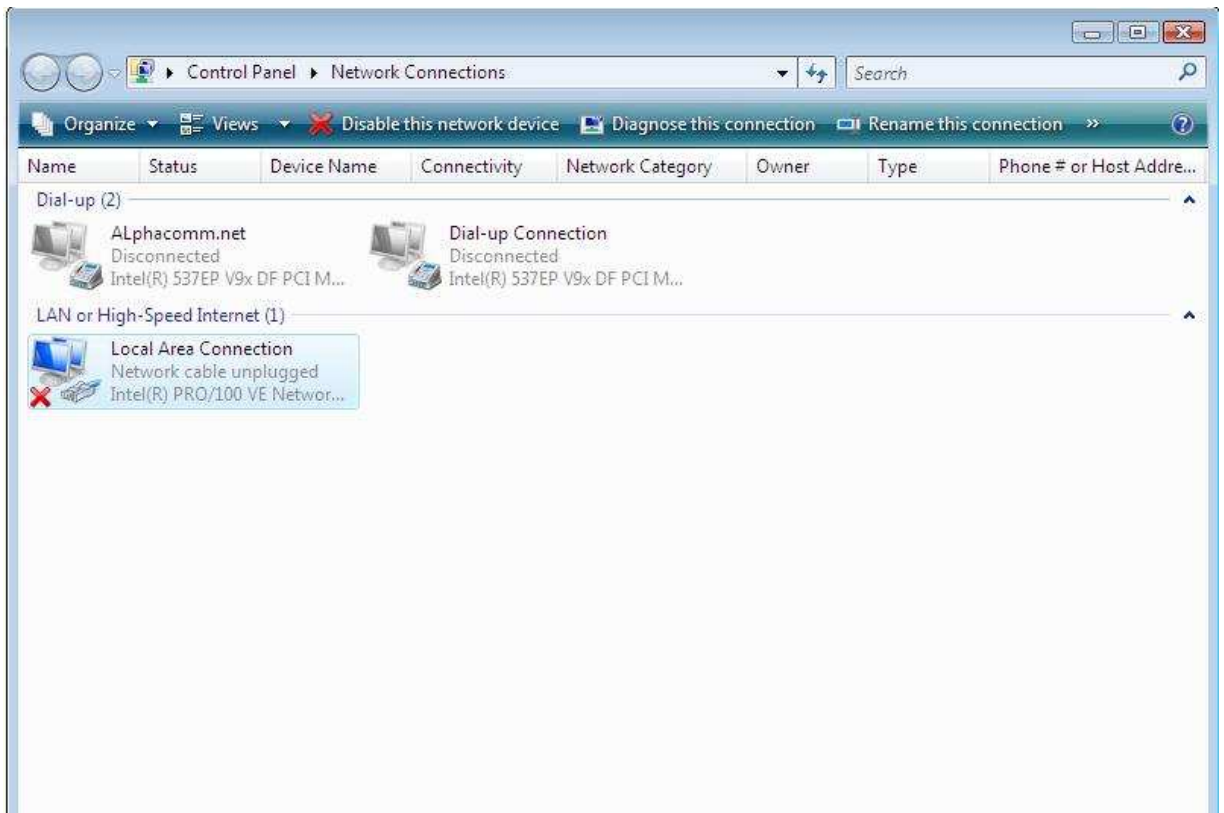


Figure 7: Network Connections

8. Click on **Internet Protocol Version 4** (see Figure 8 on next page), and then click on **Properties**. If not already selected, click the **Obtain an IP Address Automatically** radio button.

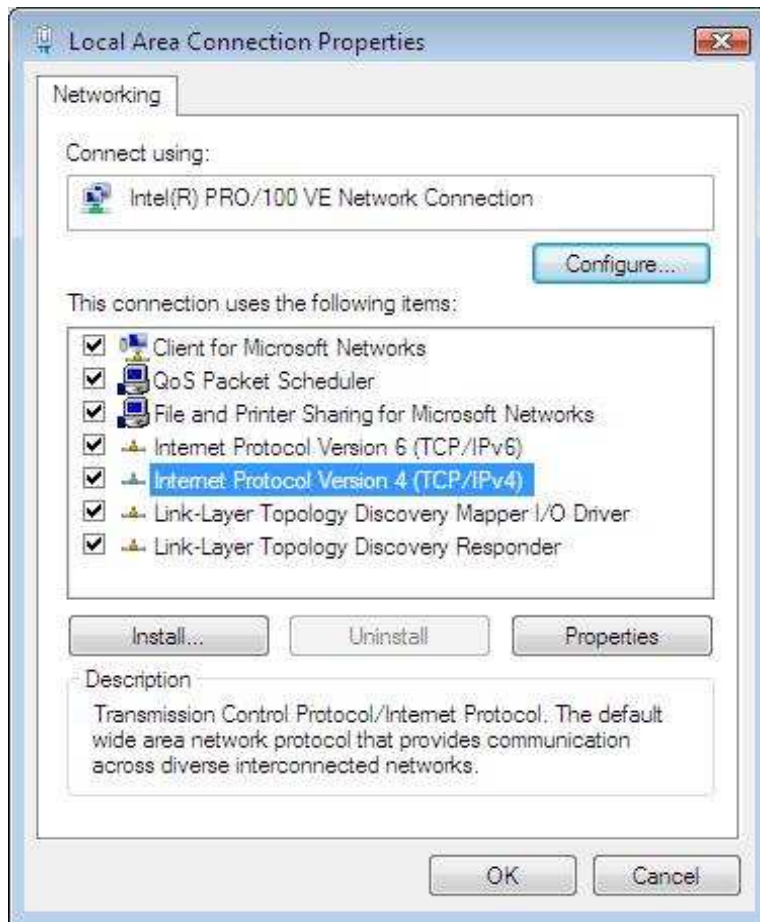



Figure 8: IP Properties

9. Once all of these settings have been checked, you can click **OK** or **Close** at the bottom of the screen. Close all open windows by clicking **OK** or **File Close**. If any changes were made, you may need to restart your computer. Click **OK** at the prompt. If you are not prompted to restart, we suggest that you restart your computer manually.

INTERNET EXPLORER BROWSER SETUP INSTRUCTIONS

1. Double click on **Internet Explorer** (the big blue ). If it tries to connect, click **Work Offline**. If it comes up with an **Internet Connection Wizard**, choose **I already have a connection** or **Set Up Manually**.
2. Once Internet Explorer starts, if the error message **Page cannot be found** comes up, click **OK**.
3. Click **Tools** at the top of the screen.
4. Select **Internet Options**.
5. Under the **General** tab, type www.alphacomm.net for your home page location.
6. Click on the **Connections** tab.
7. If any connections are listed in **Dial-Up Connections**, remove them.
8. Click **OK**.

You have completed the Internet Explorer (IE) portion of the setup. Happy browsing!

It is now time to set up your email account.

EMAIL SETUP

Windows Mail

Follow these instructions **after** setting up your Internet Explorer Browser. **Note:** Windows mail may repeat some of the settings. If you are switching from Alphacomm.net dial-up to Alphacomm.net DSL, you should not have to make any changes.

1. Double click the Windows Mail icon. **NOTE:** If this is the first time you are using Windows mail, skip to step 4.
2. Click on **Tools** and then click **Accounts** and choose next.
3. Click on **Add**, click **Email account** and then click **next**.
4. In the **Display name** box, enter the name you would like displayed when you send an email; i.e., John Smith. This name can be anything you like. Click **Next**.
5. In the **Email address box**, enter your Alphacomm.net email address; i.e., johnsmith@alphacomm.net. Click **Next**.
6. At the **Email Server Names** screen, verify that the **My incoming mail server is a** box displays **POP3**, not IMAP or HTTP. If it doesn't, select POP3 from the drop down box.
7. In the **Incoming mail (POP3, IMAP, or HTTP) server** box enter: **mail.alphacomm.net**.
8. In the **Outgoing mail (SMTP) server** box enter: **mail.alphacomm.net**
9. Place a check in the **Outgoing Server Requires Authentication** box and then click **Next**.
10. The next screen will ask for your Email Username information. Click in the line next to **E-mail Username** and enter your full email address like the following:

yourusername@alphacomm.net

Your username can be found on your Alphacomm.net Customer Information Sheet, or you can call Support at 877-450-3500 (toll free) or 906-639-3500 (local). The account name is case sensitive, so enter it exactly as shown on the customer information sheet.

11. Click in the **Password** line and type your password. The password is case sensitive, so be sure to enter it exactly as it appears on the customer information sheet.
12. You may also check the **Remember Password** option.
13. Click **Next**, then click **Finish**, then click **Close**.

NOTE: Some versions may include these additional steps:

- Choose, **I connect using a Local Area Connection.**
- Click **Next**, then click **Finish**.

YOU HAVE COMPLETED THE DSL SETUP!

THANK YOU FOR CHOOSING ALPHACOMM.NET!