



Alphacomm.net

A Subsidiary of Upper Peninsula Telephone Company

Providing Exceptional DSL, Dial-Up,
and Long Distance Services

397 US 41 N – P.O. Box 86
Carney, MI 49812-0086
906.639.3500 (Local)
877.450.3500 (Toll Free)

Windows 7 DSL Setup Guide

Rev. Nov 2009



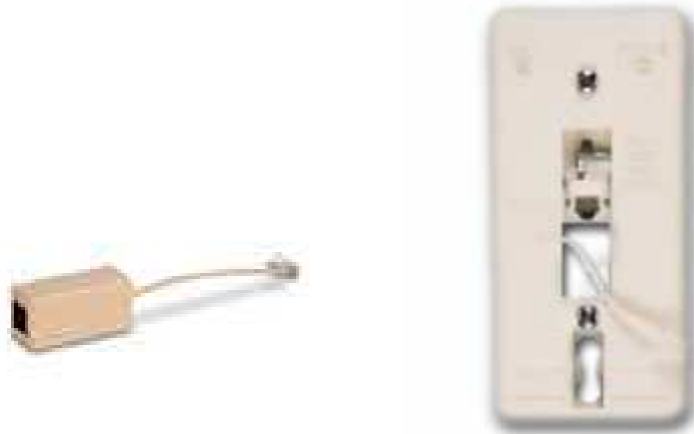
Comtrend CT-5071T

**For Technical Support, Call
877-450-3500 (Toll Free)
or
906-639-3500 (Local)**

DSL Modem Installation Instructions

1. Install DSL filters on all active phone jacks.

DSL Filters



Standard Filter

Wall Mount Filter

Figure 1: DSL Filter for Standard and Wall Mounted Phone Jacks

- a. This includes fax machines, satellite dishes, alarm systems, and telephones.
NOTE: You MUST obtain filters for all alarm systems from the alarm system manufacturer.

Satellite dishes MUST be filtered.

- b. The filter MUST be placed at the jack, NOT at the equipment.

2. To install the DSL filters on a standard jack:

- a. Unplug the phone line from the jack.
- b. Plug the phone line into the filter.
- c. Plug the filter into the wall.

3. To install the DSL filters on a wall mounted jack:

- a. Remove the existing wall telephone from the jack.
- b. Insert filter into wall jack.

- c. Mount the filter over the wall jack lugs and slide down to attach.
- d. Fully insert the telephone into the filter jack.
- e. Mount the telephone over the filter lugs and slide down to attach.

Connecting the Comtrend CT 5071-T to Computer

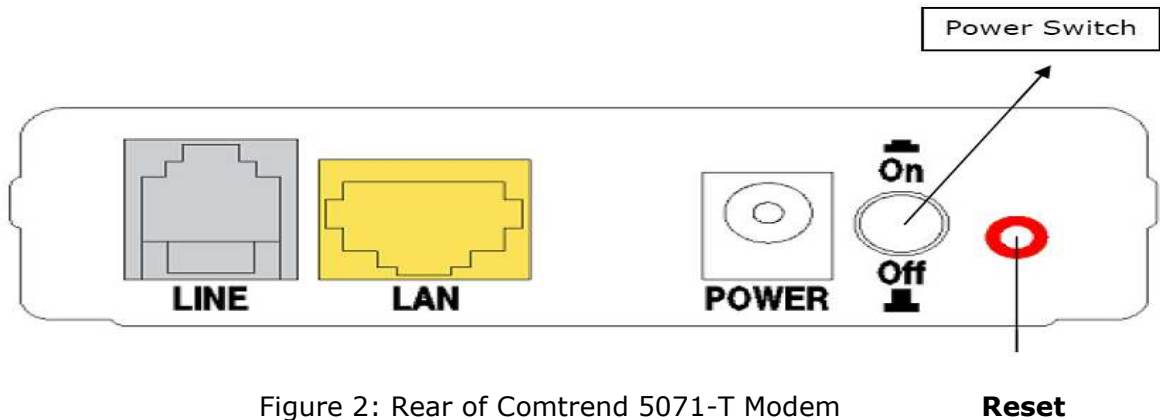


Figure 2: Rear of Comtrend 5071-T Modem

4. **Connect the Yellow Ethernet (LAN 10/100M) cable to the back of the modem and to the computer.**
5. **Connect the power cable to the back of the modem and to the power outlet or surge protector.**
6. **Verify that the modem Power button is in the On position.**
7. **Connect the telephone line to the line port on the modem.**
 - a. You should use the telephone line that was previously attached to your computer for dial-up Internet service, if available.
 - b. The phone line should run directly from the wall jack to the back of the modem. There should be no splitters or filters (except for the splitter filter provided), surge protectors, fax machines or any other equipment on that line.
 - c. DO NOT place a filter (other than splitter filter provided) on the jack where the DSL modem will be connected.
8. **Verify that the proper lights are lit on the modem.**
 - a. The power light should be lit and solid.
 - b. The ADSL Link light should be lit and solid.

- c. The LAN Link light should be lit and solid.
- d. The Internet light should be lit and solid but may blink rapidly when surfing the Internet.

9. *Try surfing the Internet.*****

- A. If you can surf the Internet, the installation is complete. Continue to the "E-Mail Setup" section.

If you cannot surf the Internet continue to the "Configure the PC" section.

Configure the PC

1. The next step is to disable any proxy settings in the Control Panel screen.
 - a. Click the **Start orb**, in the lower left hand corner of the screen, then choose **Control Panel**.
2. In the Control Panel, click on **Network** and **Internet**.
 - a. You will then need to click on the **Internet Options** Link.
 - b. Next click the **connections** tab and then the **Lan settings** tab.



Figure 3: Internet Properties

3. In the **Local Area Network (LAN) settings** screen, make sure that there is NOT a check mark on the **Use a proxy server** (see Figure 4).

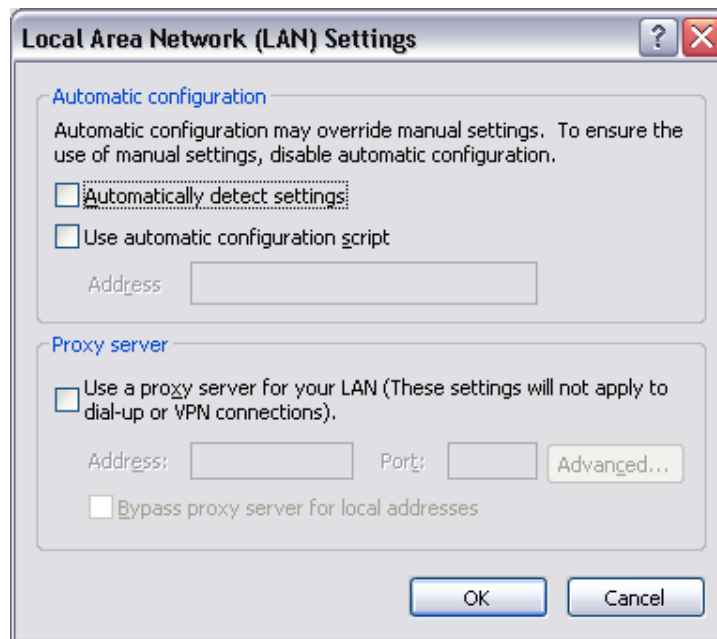


Figure 4: LAN Settings

4. When you have verified that there is not a check mark on the **proxy server**, click **OK** at the bottom of the screen and then click **ok** again. This will take you back to the **Control Panel**.
5. In the **Control Panel**, click on the **Network and Sharing Center** link.
6. Double click on **Local Area Connection**.



Figure 5: Local and Internet

7. Click **properties**.

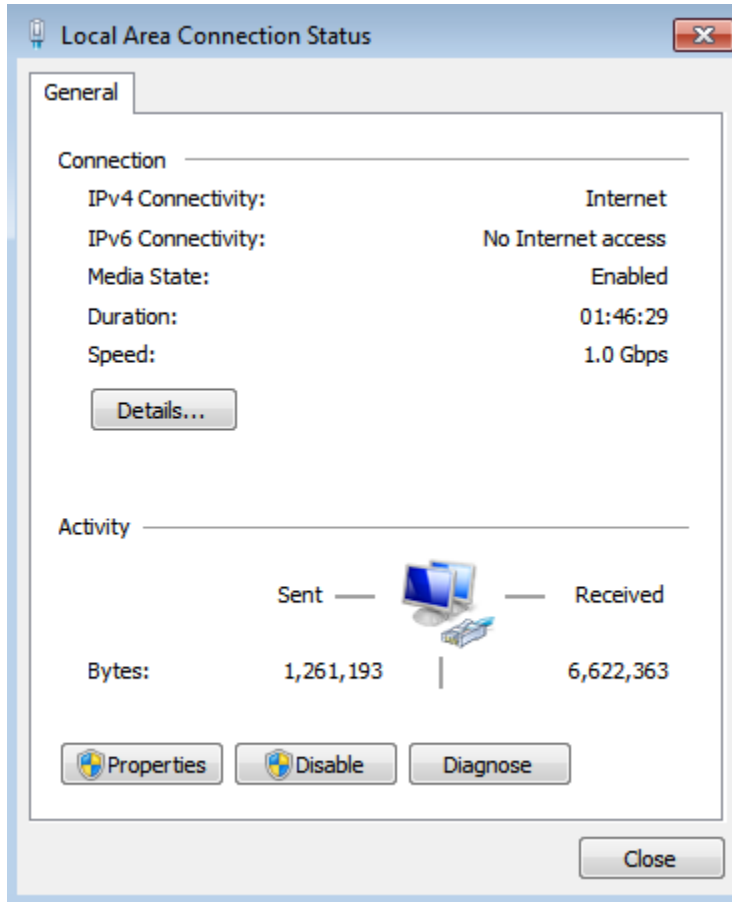


Figure 6: Local area connection status

8. Double click on **Internet Protocol Version 4** (see Figure 7). If not already selected, click the **Obtain an IP Address Automatically** radio button.

Make sure there is a check in **Obtain DNS server address automatically**.

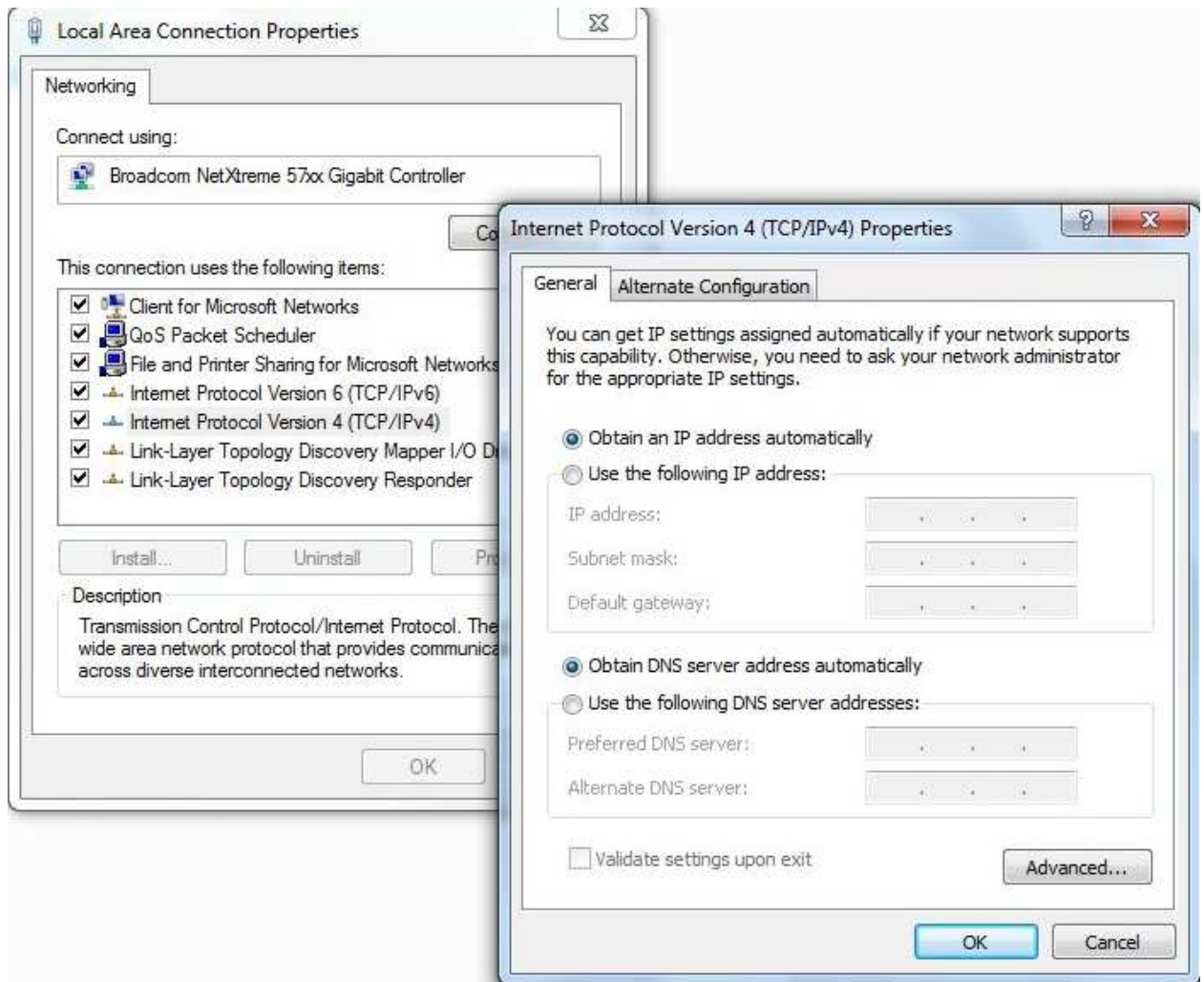



Figure 7: Network Connections

9. Once all of these settings have been checked, you can click **OK** or **Close** at the bottom of the screen. Close all open windows by clicking **OK** or **Close**. If any changes were made, you may need to restart your computer. Click **OK** at the prompt. If you are not prompted to restart, we suggest that you restart your computer manually.

10. Try surfing the Internet.

INTERNET EXPLORER BROWSER SETUP INSTRUCTIONS

1. Double click on **Internet Explorer** (the big blue ). If it tries to connect, click **Work Offline**. If it comes up with an **Internet Connection Wizard**, choose **I already have a connection** or **Set Up Manually**.
2. Once Internet Explorer starts, if the error message **Page cannot be found** comes up, click **OK**.
3. Click **Tools** at the top of the screen.
4. Select **Internet Options**.
5. Under the **General** tab, type www.alphacomm.net for your home page location.
6. Click on the **Connections** tab.
7. If any connections are listed in **Dial-Up Connections**, remove them.
8. Click **OK**.

You have completed the Internet Explorer (IE) portion of the setup. Happy browsing!

It is now time to set up your email account.

Windows Live Mail Setup

Windows Live Mail

1. Go to <http://download.live.com/> and then click **Download**.
2. When prompted click **Run**.
3. When prompted click **Run**.
4. Choose the programs you want to install. Make sure there is a check on **Mail**. Everything else can be unchecked.
5. Click **Install**
6. Click **continue**.
7. Click **Add e-mail account**
8. Enter your e-mail address.
9. Enter your password.
10. Enter your Display name and then check **Manually configure server settings for e-mail account** and click **next**.
11. **My incoming mail server** should read POP3
12. For incoming mail server enter **mail.alphacomm.net**
13. For outgoing server enter **mail.alphacomm.net**
14. Put a check mark in **My outgoing server requires authentication**.

Where can I find my e-mail server information?

Incoming Server Information

My incoming mail server is a POP3 server.

Incoming server: mail.alphacomm.net Port: 110

This server requires a secure connection (SSL)

Log on using: Clear text authentication

Login ID (if different from e-mail address):
youremailaddress@alphacomm.net

Outgoing Server Information

Outgoing server: mail.alphacomm.net Port: 25

This server requires a secure connection (SSL)

My outgoing server requires authentication

Next Cancel

Figure: 1 Add an E-mail Account

15. Click **Next**
16. Click **Finish**