



Alphacomm.net

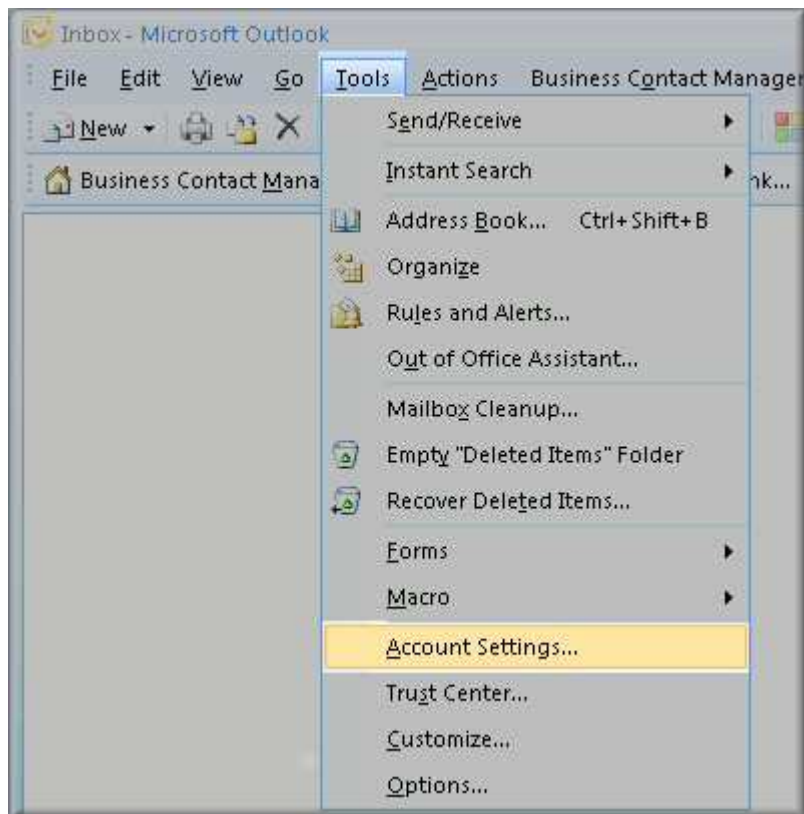
A Subsidiary of Upper Peninsula Telephone Company

Providing Exceptional DSL, Dial-Up,
and Long Distance Services

397 US 41 N – P.O. Box 86
Carney, MI 49812
Telephone: 906-639-3500
Fax: 906-639-9935

Configuring your email client: Outlook 2007

1. Open Outlook 2007.
2. Click the Tools menu, and select Account Settings.





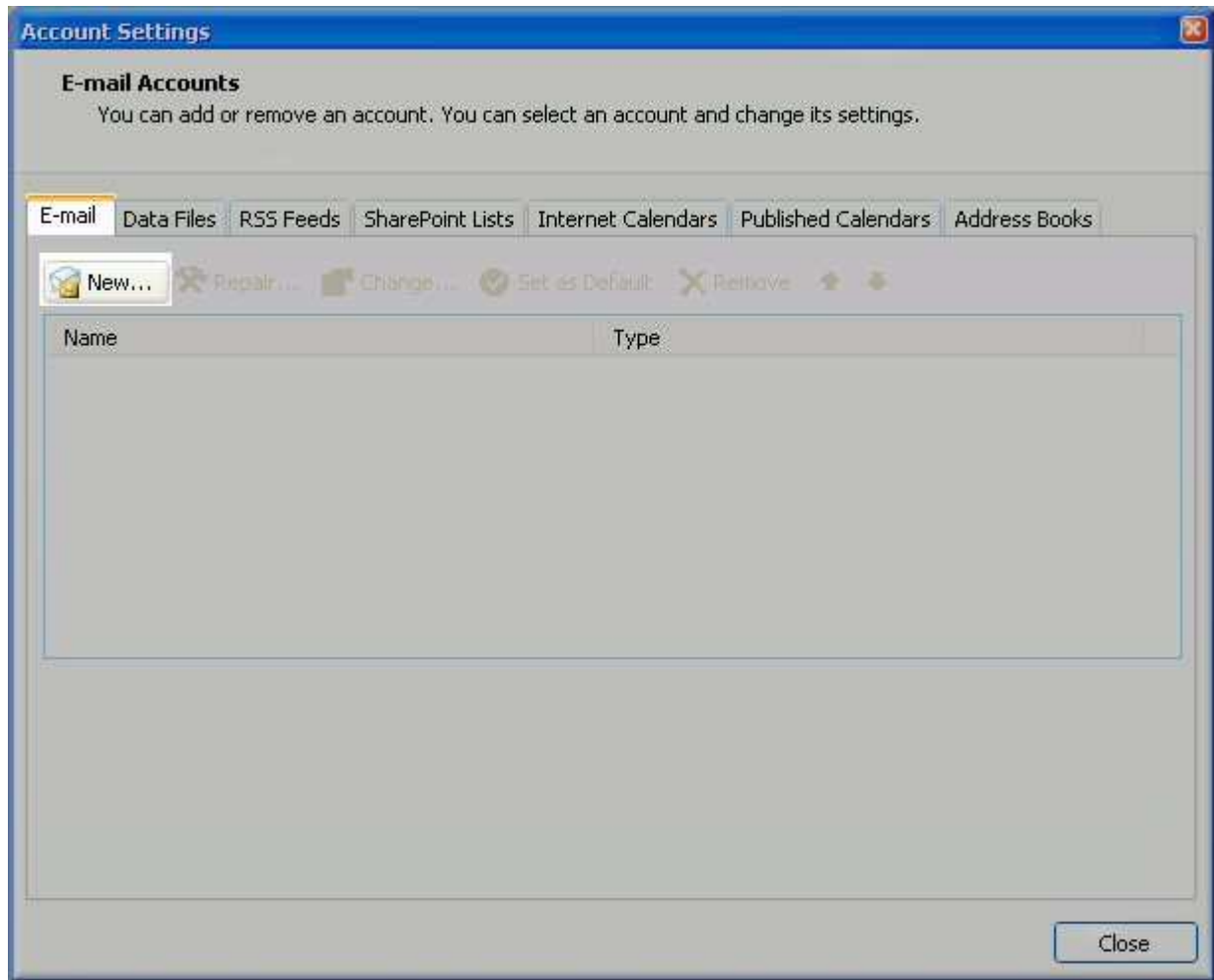
Alphacomm.net

A Subsidiary of Upper Peninsula Telephone Company

Providing Exceptional DSL, Dial-Up,
and Long Distance Services

397 US 41 N – P.O. Box 86
Carney, MI 49812
Telephone: 906-639-3500
Fax: 906-639-9935

3. Click on the Email tab and click on the New... button.





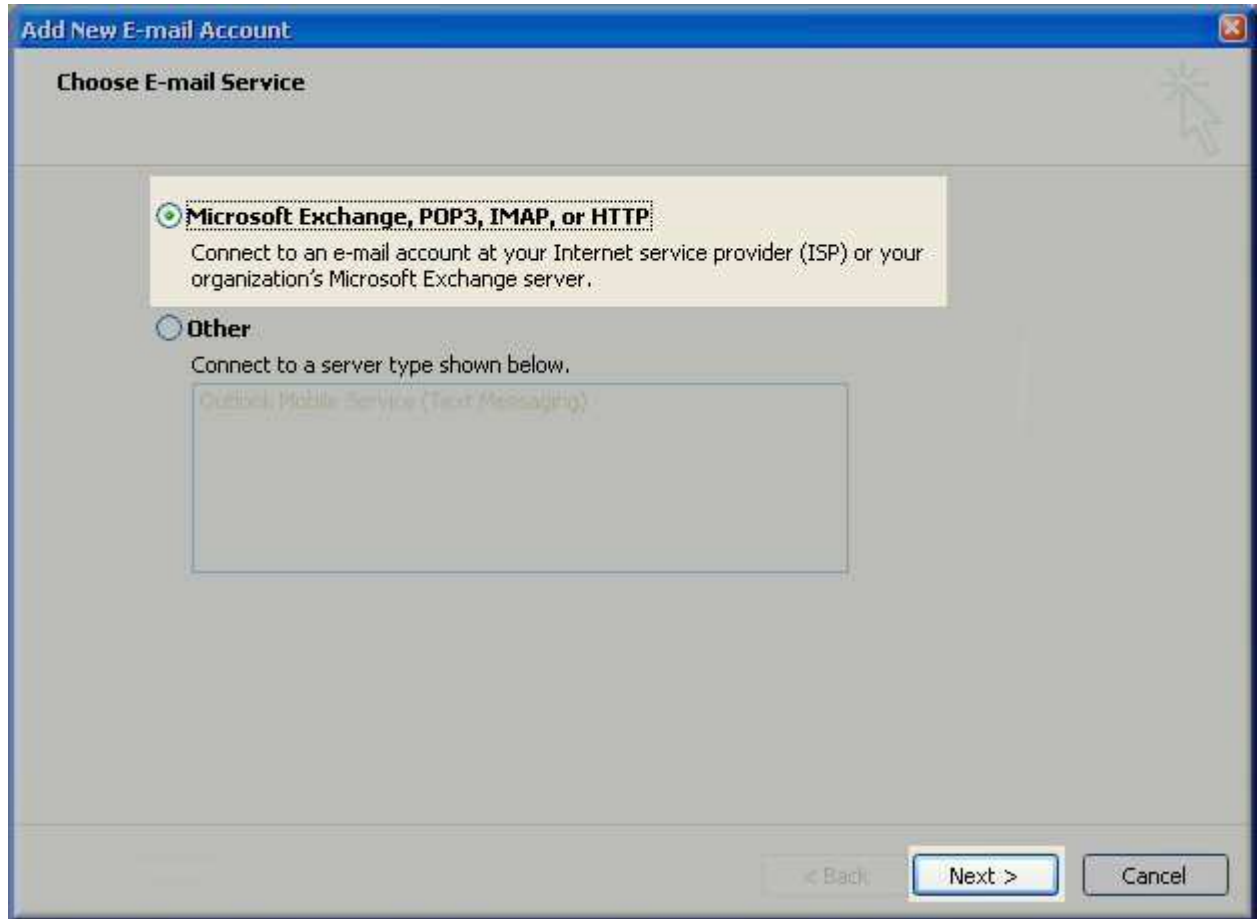
Alphacomm.net

A Subsidiary of Upper Peninsula Telephone Company

Providing Exceptional DSL, Dial-Up,
and Long Distance Services

397 US 41 N – P.O. Box 86
Carney, MI 49812
Telephone: 906-639-3500
Fax: 906-639-9935

4. Next select Microsoft Exchange, POP3, [IMAP](#) or HTTP and click Next.



5. On the Auto Account Setup window check the Manually configure server settings or additional server types and click Next.



Alphacomm.net

A Subsidiary of Upper Peninsula Telephone Company

Providing Exceptional DSL, Dial-Up,
and Long Distance Services

397 US 41 N – P.O. Box 86
Carney, MI 49812
Telephone: 906-639-3500
Fax: 906-639-9935

Add New E-mail Account

Auto Account Setup

Your Name:
Example: Barbara Siskovic

E-mail Address:
Example: barbara@comcast.com

Password:
Retype Password:
Type the password your Internet service provider has given you.

Manually configure server settings or additional server types.

< Back Next > Cancel



Alphacomm.net

A Subsidiary of Upper Peninsula Telephone Company

Providing Exceptional DSL, Dial-Up,
and Long Distance Services

397 US 41 N – P.O. Box 86
Carney, MI 49812
Telephone: 906-639-3500
Fax: 906-639-9935

6. Select Internet E-mail option and click Next.

Add New E-mail Account

Choose E-mail Service

Internet E-mail:
Connect to your POP, IMAP, or HTTP server to send and receive e-mail messages.

Microsoft Exchange
Connect to Microsoft Exchange for access to your e-mail, calendar, contacts, faxes and voice mail.

Other
Connect to a server type shown below.

Outlook Mobile Service (Text Messaging)

< Back Next > Cancel

7. Fill in the following fields:

- Enter Your Name as you want it to appear.
- Enter your full email address username@alphacomm.net in the Email address: field.
- Select POP3 or IMAP.
- Enter mail.alphacomm.net in the Incoming mail (POP3, IMAP) server: field.
- Enter mail.alphacomm.net in the Outgoing mail (**SMTP**) server: field.
- Enter your username username@alphacomm.net in the Account name field.
- Enter your email password in the Password: field.



Alphacomm.net

A Subsidiary of Upper Peninsula Telephone Company

Providing Exceptional DSL, Dial-Up,
and Long Distance Services

397 US 41 N – P.O. Box 86
Carney, MI 49812
Telephone: 906-639-3500
Fax: 906-639-9935

Add New E-mail Account

Internet E-mail Settings
Each of these settings are required to get your e-mail account working.

User Information

Your Name: John Smith
E-mail Address: jsmith@my-domain-temple.net

Server Information

Account Type: POP3
Incoming mail server: mail.my-domain-temple.net
Outgoing mail server (SMTP): mail.my-domain-temple.net

Logon Information

User Name: jsmith@my-domain-temple.net
Password: *****

Remember password

Require logon using Secure Password Authentication (SPA)

Test Account Settings

After filling out the information on this screen, we recommend you test your account by clicking the button below. (Requires network connection)

Test Account Settings ...

More Settings ...

< Back Next > Cancel

8. Perform the following steps:

- o Click on More Settings...
- o Click on the Outgoing Server tab.
- o Check My outgoing server (SMTP) Requires Authentication
- o Make sure Use same setting as my incoming mail server is also checked.
- o Click on OK.

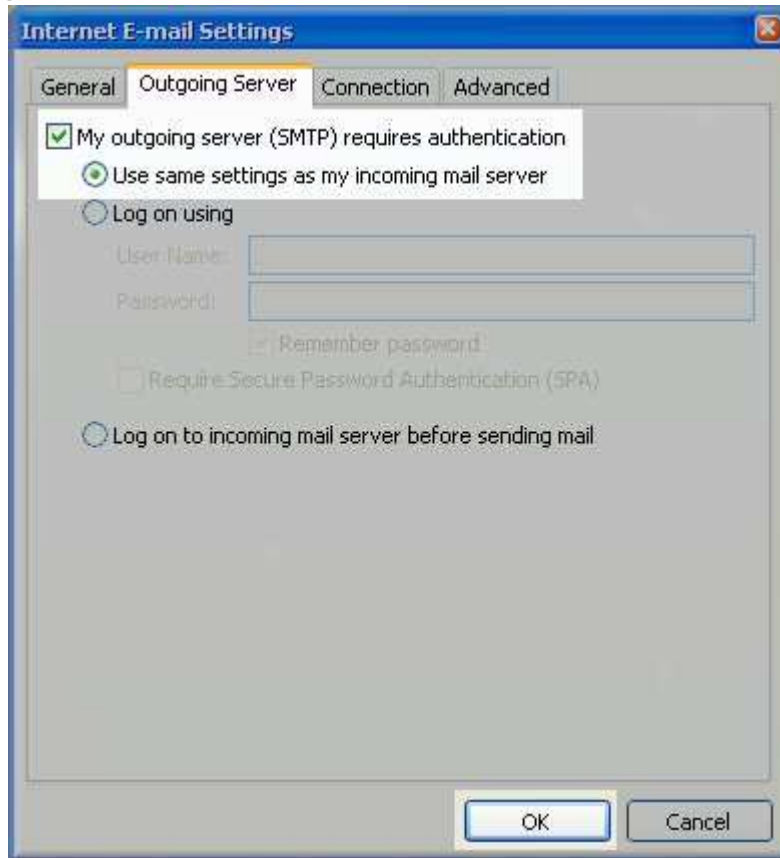


Alphacomm.net

A Subsidiary of Upper Peninsula Telephone Company

Providing Exceptional DSL, Dial-Up,
and Long Distance Services

397 US 41 N – P.O. Box 86
Carney, MI 49812
Telephone: 906-639-3500
Fax: 906-639-9935



9. Click the Test Account Settings button and you should see all items with green check marks... Click the Close Button to close the test window. Click OK to save your settings.



Alphacomm.net

A Subsidiary of Upper Peninsula Telephone Company

Providing Exceptional DSL, Dial-Up,
and Long Distance Services

397 US 41 N – P.O. Box 86
Carney, MI 49812
Telephone: 906-639-3500
Fax: 906-639-9935

Add New E-mail Account

Internet E-mail Settings
Each of these settings are required to get your e-mail account working.

User Information

Your Name: John Smith
E-mail Address: jsmith@my-domain-temple.net

Server Information

Account Type: POP3
Incoming mail server: mail.my-domain-temple.net
Outgoing mail server (SMTP): mail.my-domain-temple.net

Logon Information

User Name: jsmith@my-domain-temple.net
Password: *****
 Remember password
 Require logon using Secure Password Authentication (SPA)

Test Account Settings
After filling out the information on this screen, we recommend you test your account by clicking the button below. (Requires network connection)

Test Account Settings ...

More Settings ...

< Back Next > Cancel

10. Congratulations. You have finished the setup of your email account. Click Finish to close the setup wizard.



Alphacomm.net

A Subsidiary of Upper Peninsula Telephone Company

Providing Exceptional DSL, Dial-Up,
and Long Distance Services

397 US 41 N – P.O. Box 86
Carney, MI 49812
Telephone: 906-639-3500
Fax: 906-639-9935

